



HOW TO RECYCLE YOUR WASTE?



net
education
www.net-education.it



ONLINE DESK
Access the rate and TARI service,
submit municipal waste service
reports and/or inquiries



**SCAN THE QR CODE
TO GET THE APP**
www.net-education.it/app



Numero Verde
800 520 406

net
www.netaziendapulita.it



ORGANIC WASTE (NO LIQUIDS)

FILL THE COMPOSTABLE BAG



CLOSE THE BAG



CONFER IN THE BROWN COLORED CONTAINER



EXAMPLES OF WHAT TO CONFER:

Fruits, vegetables, fish, meat, bread, pasta, rice, general food remains, coffee and herbal tea grounds, tea and chamomile tea filters, napkins and kitchen towels with food remains, cut flowers, etc. The following packaging with the symbol (in the shape of a triangle consisting of three arrows) and international recycling codes indicated: PLA-7, C/PAP-87*

*Caution: if there are no specific instructions in the package to deliver this packaging to organic waste, this material should be delivered to the undifferentiated dry residual.

YES



COMPOSTABLE PACKAGING



TEA BAG



FOOD WASTE



FLOWERS



EXTINGUISHED ASH



PAPER TOWELS (USED)



COFFEE PODS

EXAMPLES OF WHAT NOT TO CONFER:

Any kind of non-organic waste such as packaging (paper, plastic, glass, metals), mussel shells, clams, hot food, liquids, diapers, sanitary napkins, rags even if wet, pet bedding, inert, etc.

NO



BONES



CONTAINER/BAG CONTAINING FOOD



CANDLES



SHELLFISH SHELLS



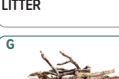
CIGARETTE BUTTS



LITTER



CORKS



TWIGS



TISSUES AND COTTON



WET WIPES



RESIDUAL DRY WASTE



GRASS AND SMALL PRUNING

WHERE TO CONFER

RDW RESIDUAL DRY WASTE

G GRASS AND SMALL PRUNING



PLASTIC PACKAGING

DIFFERENTIATE WASTE



CONFER IN THE YELLOW COLORED CONTAINER



EXAMPLES OF WHAT TO CONFER:

All plastic wrappings, plastic packaging, plastic bottles, plastic containers for liquids (shampoos, detergents, fabric softeners, creams, toothpastes, etc.), food trays and bags, clean polystyrene trays, empty rigid or shaped blisters and containers, plastic vegetable and fruit crates. The following packaging with the symbol (in the shape of a triangle made up of three arrows) and international recycling codes indicated: PET-01, PE-HD/HDPE-02, PVC/V-03, PE-LD/LDPE-04, PP-05, PS-06, PA, O/OTHER-07, C/LPDE-90.

Packaging, where possible, should be reduced in volume before being delivered.

YES



FRUIT AND VEGETABLE NET



SMALL PLASTIC POTS



HANGERS



BLISTER



BOTTLE



POLYSTYRENE



LIQUID BOTTLES



CREAMS, TOOTHPASTE, ETC.



FOOD TRAYS



FOOD FILMS

EXAMPLES OF WHAT NOT TO CONFER:

Dirty packaging, soiled by its contents (especially seafood packaging) hazardous waste containers, bags made of biodegradable material, etc.

NO



BALLPOINT PEN



TOYS



COMPOSTABLE PACKAGING



POLYSTYRENE BOXES (FISH)



FUNNEL



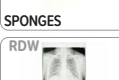
COMB



RUBBER TUBE



SINGLE-USE RAZOR



SPONGES



PLASTIC STRAW



X-RAY PLATE



TOOTHBRUSHES

WHERE TO CONFER

RDW RESIDUAL DRY WASTE

CC COLLECTION CENTER



PAPER, CARDBOARD, TETRA PAK PACKAGING

DIFFERENTIATE WASTE



CONFER IN THE BLUE COLORED CONTAINER



EXAMPLES OF WHAT TO CONFER:

Newspapers and magazines, catalogs and telephone directories, flyers and advertising materials, books and notebooks, cartons, paper bags, cardboard boxes for food, (e.g., for sugar, pasta, rice), miscellaneous cardboard boxes, tetra pak containers (e.g., for milk, wine, juice, etc.), pizza boxes cleaned and free of organic residue.

The following packaging with the symbol (in the shape of a triangle consisting of three arrows) and international recycling codes indicated: PAP/PCB-20, PAP-21, PAP-22, PPB/PBD-23, C/PAP-84, other paper with codes 24 to 39.

YES



EGG BOX



NEWSPAPERS



BOOKS



TETRA PAK



PACKAGING FOR FOOD IN PAPER/CARTON



PIZZA BOX



MEDICINE BOX



COMMERCIAL BAG



BOX OF CARDBOARD (SMALL)

EXAMPLES OF WHAT NOT TO CONFER:

Dirty paper, napkins and handkerchiefs, oiled or plasticized paper, plasticized boxes and covers, composite materials, tax receipts, thermal paper.

NO



RECEIPTS



SANDPAPERS



PHOTOGRAPHS



NOSE TISSUES



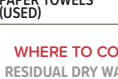
BAKING PAPER



WET WIPES



PAPER TOWELS (USED)



RESIDUAL DRY WASTE

CC COLLECTION CENTER

WHERE TO CONFER

RDW RESIDUAL DRY WASTE

CC COLLECTION CENTER



GLASS AND JAR PACKAGING

DIFFERENTIATE WASTE



CONFER IN THE GREEN COLORED CONTAINER



EXAMPLES OF WHAT TO CONFER:

Glass bottles, jars, jars and their parts, glass containers including of medicines (without their contents) metal food cans, cans, aluminum trays. The following packaging with the symbol (in the shape of a triangle consisting of three arrows) and international recycling codes indicated: GL-70, GL-71, GL-72, FE-40*, ALU-41*.

YES



BOTTLE



TIN



JAR



MEDICINE BOTTLE (EMPTY)



TRANSPARENT GLASS



GLASS SHARDS



ALUMINUM TRAY



CAN

EXAMPLES OF WHAT NOT TO CONFER:

Light bulbs, glasses, ceramic and/or crystal plates and vases, neon tubes, mirrors, jars containing chemicals, paints, etc.

NO



CROCKERY



PAINT CAN



LIGHT BULBS



NEON TUBES



MIRRORS

WHERE TO CONFER

RDW RESIDUAL DRY WASTE

CC COLLECTION CENTER



RESIDUAL DRY WASTE

FILL THE BAG



CLOSE THE BAG



CONFER IN THE GREY COLORED CONTAINER



EXAMPLES OF WHAT TO CONFER:

Small parts of ceramics, diapers/pampkins, oiled or plasticized papers, disposable razors, audio and video cassettes, pantyhose, gloves and masks, diapers and sanitary napkins, ballpoint pens, small funnels, Styrofoam boxes of fish products (in modest quantity and reduced in volume), the litter boxes for pets, rags.

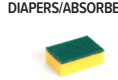
YES



USED DIAPERS/ABSORBENTS



SHOES



SPONGES



LITTER



COTTON SWAB



SHELLFISH SHELLS



VHS/DVD



FUNNELS



TOOTHBRUSHES



BALLPOINT PENS

EXAMPLES OF WHAT NOT TO CONFER:

Recyclable waste provided in other waste categories, liquid waste, toxic waste, flammable waste, bulky items, small household appliances, demolition materials (drywall, stones, aggregates) grass and brushwood.

NO



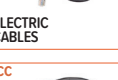
PAINT CAN



ELECTRIC CABLES



MEDICINES



HAIR DRYER



BATTERIES



ELECTRIC SHAVERS



SYRINGES



LIGHT BULBS

WHERE TO CONFER

BATT BATTERIES

MED MEDICINES

CC COLLECTION CENTER



GREEN WASTE, BULKY WASTE AND MUNICIPAL COLLECTION CENTERS

The collection center is a place where numerous types of sorted waste (including bulky waste) must be delivered such as:

- WEEE (household appliances and electronics in general),
- bulky/durable waste,
- mattresses and furniture,
- car batteries,
- edible and automotive oils,
- tires,
- metal materials, etc.

Only "household" and "non-household" (duly registered) TARI users are allowed to deliver waste. Materials destined for home collection (glass, paper, plastic packaging, cans, etc.) may also be delivered to the collection centers if there are large quantities and/or large sizes.

The two collection centers are equipped with special access control equipment; therefore, the Regional Services Card (CRS) or Health Card or the specific card (badge) provided by Net for "non-domestic" users (stores, businesses, studios, etc.) must be shown by users. It is forbidden to pick up and remove any kind of waste.

The collection center is not accessible and usable by unauthorized firms, businesses or productive activities (waste from the circuit of artisan and productive enterprises in general cannot be delivered).

SUMMER HOURS
(April-September):
Monday - Saturday 08:00 - 18:00
and Sunday 08:00 - 15:00

WINTER HOURS
(October-March):
Monday - Saturday 08:00 - 17:00
Sunday 08:00 - 15:00

Find out all the details by scanning the QR code above or visit:
netaziendapulita.it/comuni/udine

BOOK A HOME PICKUP

INGOMBRANTI, HOME APPLIANCES, GREEN WASTE, FURNITURE ECC.

If you cannot transport bulky waste or green waste from mowing, Net S.p.A. offers convenient and sustainable home collection service. Book pickup directly to your home in a few simple steps. An affordable service: there is a capped cost to ensure sustainability. Find out all the details by scanning the QR code above or visit:
netaziendapulita.it/comuni/udine/sportello-e-tariffe/raccolta-rifiuti-ingombranti

DO NOT ABANDON WASTE AND DO NOT DELIVER IT WRONGLY



Damage to the environment

Abandonment pollutes soil, water and compromises natural habitats



Penalties